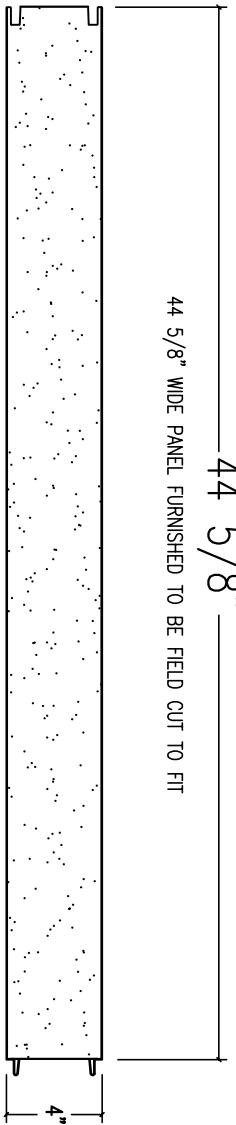
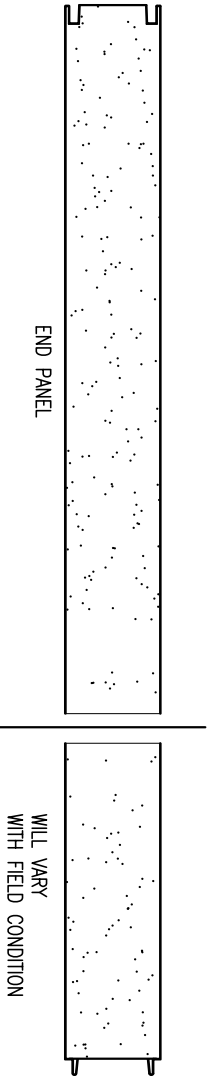


44 5/8" WIDE PANEL FURNISHED TO BE FIELD CUT TO FIT

44 5/8"



**STANDARD SIZE INSULATED PANEL**



**FIELD CUT START AT END PANEL DETAIL M**

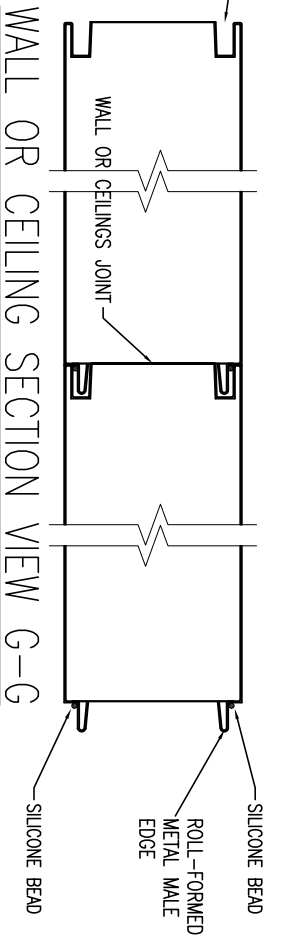
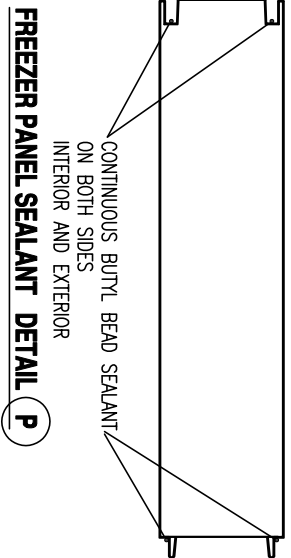
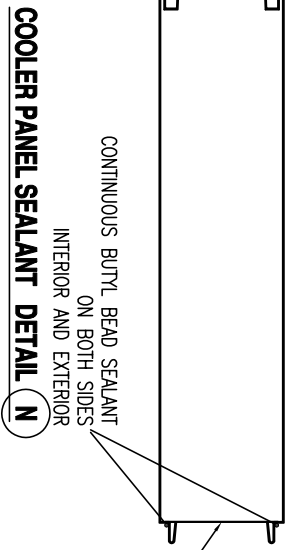
**AK-MTG QUICK-SNAP™  
WAREHOUSE PANEL**

<b>4" INSULATION:</b>
<b>AK-XPS4™</b>
<b>HI-PERFORMANCE PANEL CORE</b>
<b>COOLERS R-29</b>
<b>FREEZERS R-32</b>

**METAL FINISH**

(1) 26 GAUGE STUCCO EMBOSSED ACRYLIC COATED GALVALUME OR USDA WHITE PAINT WITH PVC LIGHT TAK PROTECTION.

WALLS, FROM 7'-0" TO 30'-0"  
CEILINGS INTERIOR, UNSUPPORTED UP TO 20 FT  
MASS INSULATION, DOW'S PANEL CORE "BLUEBOARD"



PLEASE, SEE INSTALLATION PROCEDURE ON PAGE 8



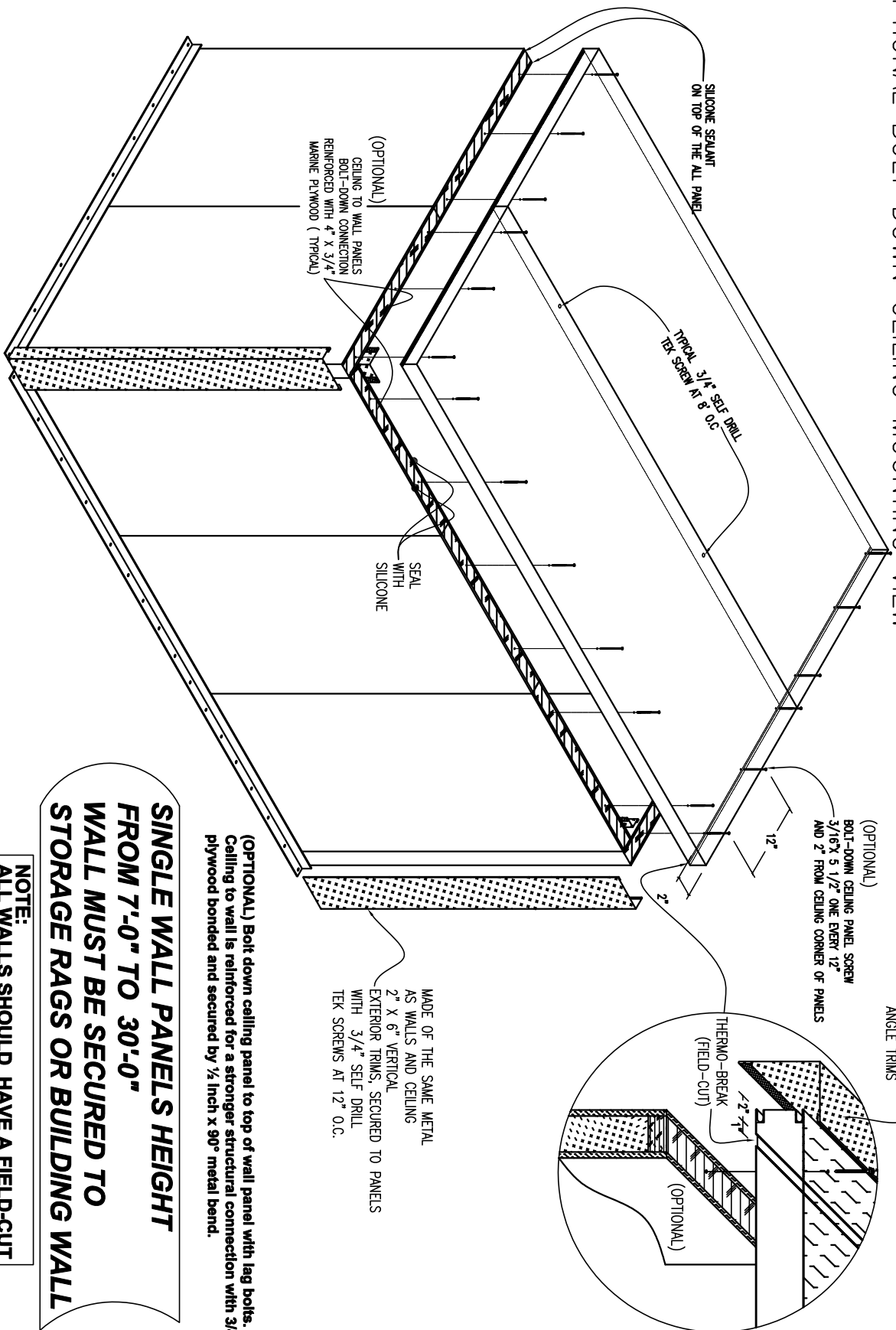
SAMPLE DRAWING (OF AN EXISTING JOB)-WAREHOUSE PANELS

SCALE: NTS      DRAWN BY:      DATE:      REV:

JOB NUMBER:

575 EAST 43th AVENUE, HALEAH, FLORIDA 33043  
TEL.(305)884-8384.TOLL FREE 1(800)627-5665  
FAX(305)884-8330

# OPTIONAL BOLT DOWN CEILING MOUNTING VIEW

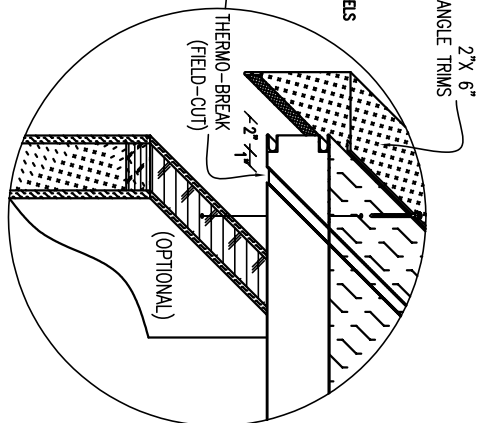


**SINGLE WALL PANELS HEIGHT FROM 7'-0" TO 30'-0" WALL MUST BE SECURED TO STORAGE RAGS OR BUILDING WALL**

**NOTE: ALL WALLS SHOULD HAVE A FIELD-CUT THERMO-BREAK ON PANEL OVER 20' HEIGHT.**

(OPTIONAL) Bolt down ceiling panel to top of wall panel with lag bolts. Ceiling to wall is reinforced for a stronger structural connection with 3/4" plywood bonded and secured by 1/2 inch x 90° metal bend.

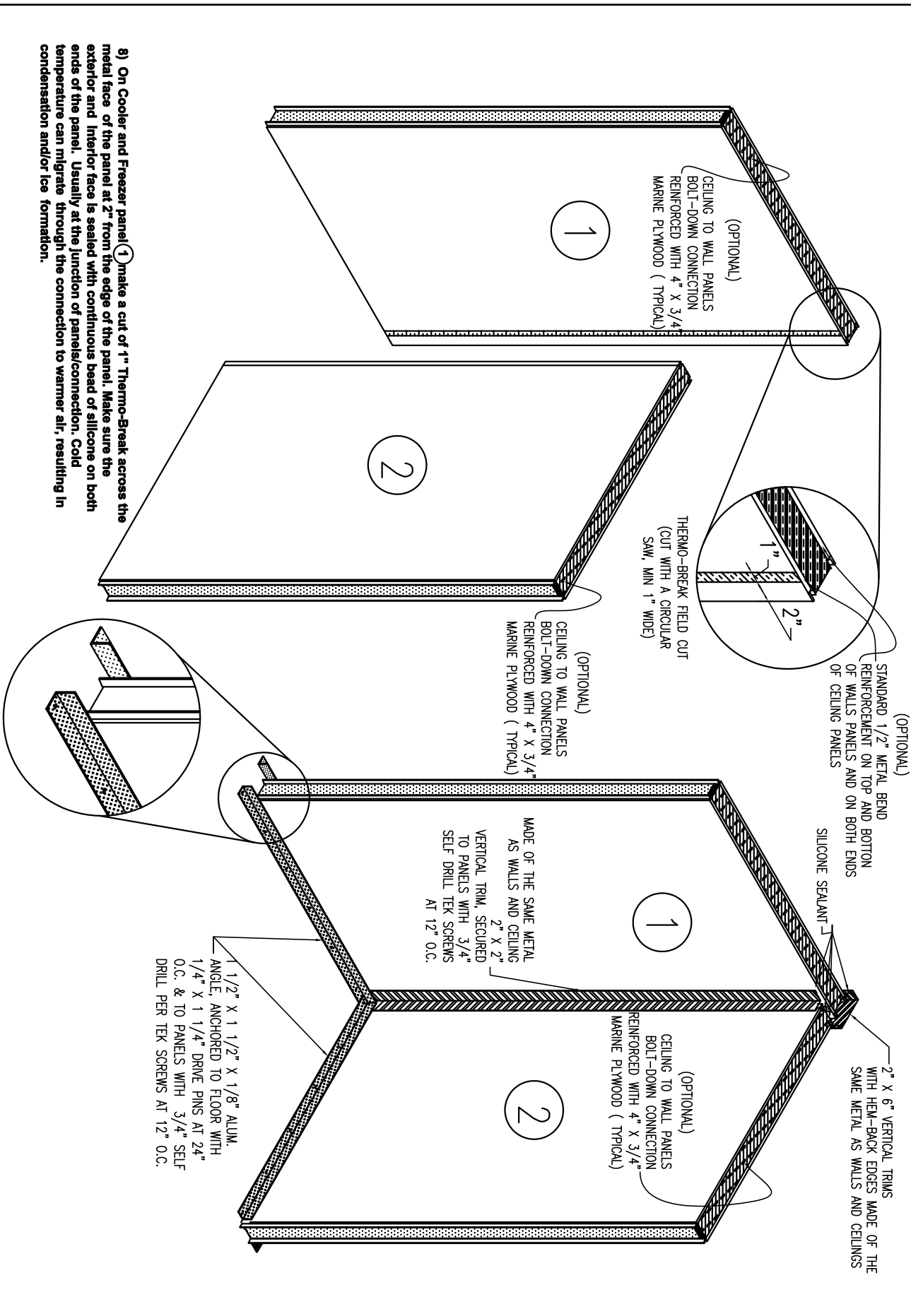
MADE OF THE SAME METAL AS WALLS AND CEILING  
2" X 6" VERTICAL EXTERIOR TRIMS, SECURED TO PANELS WITH 3/4" SELF DRILL TEK SCREWS AT 12" O.C.



## SAMPLE DRAWING (OF AN EXISTING JOB)-WAREHOUSE PANELS



SCALE: NTS	DRAWN BY:	DATE:	REV:
575 EAST 43th AVENUE, HIALEAH, FLORIDA 33043 TEL.(305)884-8384.TOLL FREE 1(800)627-5665 FAX(305)884-8330		JOB NUMBER:	



SAMPLE DRAWING (OF AN EXISTING JOB)-WAREHOUSE PANELS

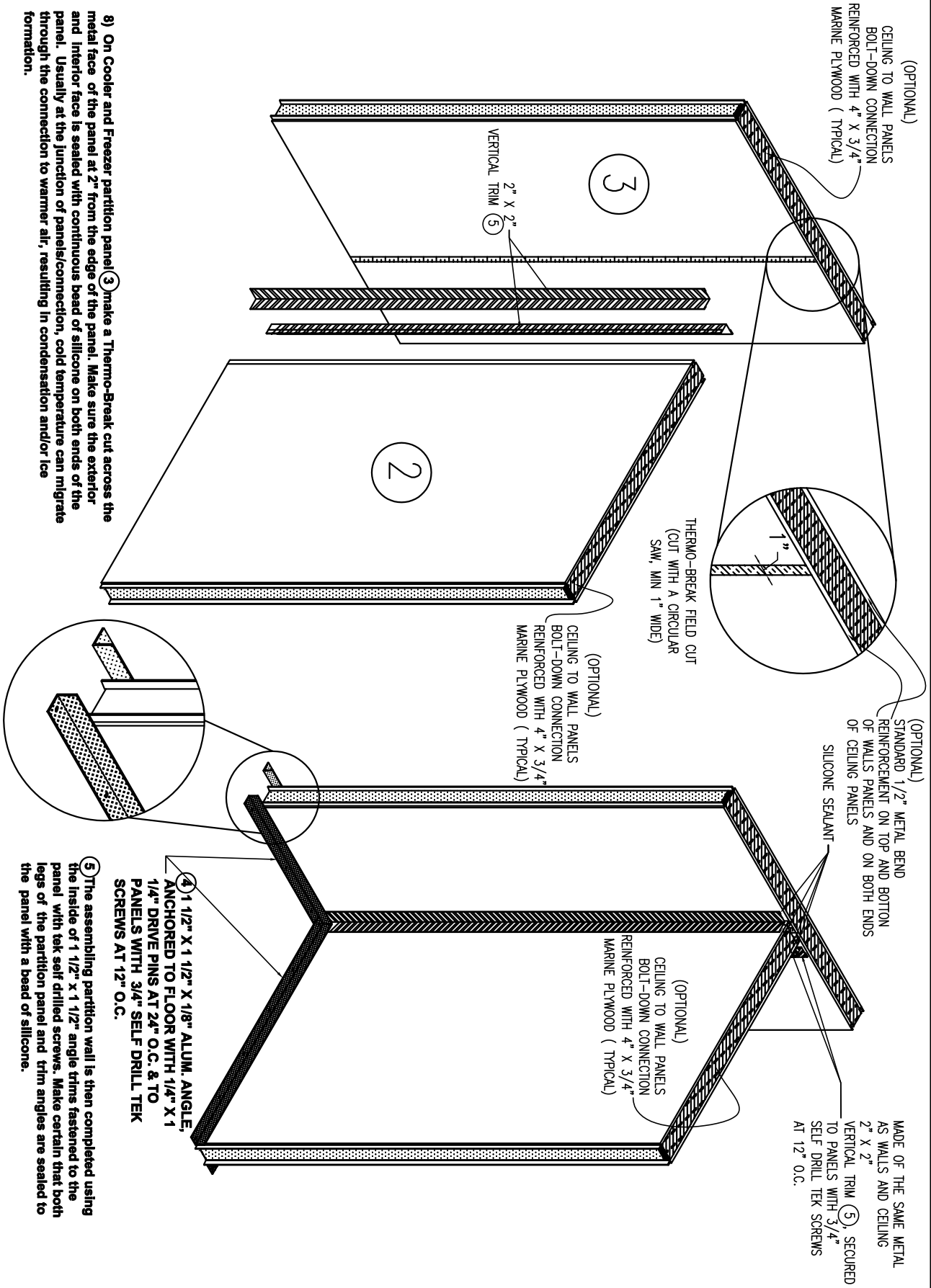
SCALE: 1/4"=1'      DRAWN BY:      DATE:      REV:

JOB NUMBER:

575 EAST 43th AVENUE, WALEAH, FLORIDA 33043  
TEL.(305)884-8384.TOLL FREE 1(800)627-5665  
FAX(305)884-8330



8) On Cooler and Freezer partition panel (3) make a Thermo-Break cut across the metal face of the panel at 2" from the edge of the panel. Make sure the exterior and interior face is sealed with continuous bead of silicone on both ends of the panel. Usually at the junction of panels/connection, cold temperature can migrate through the connection to warmer air, resulting in condensation and/or ice formation.



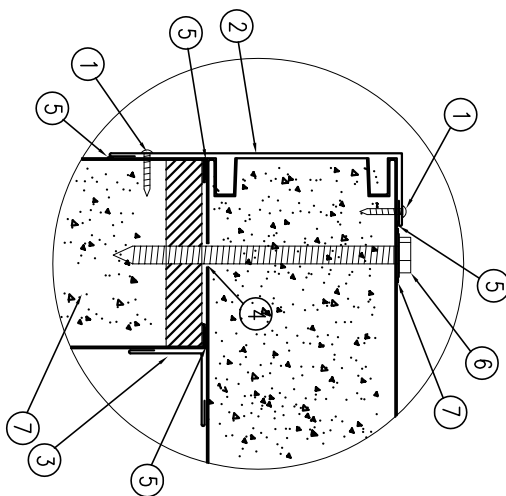
5) The assembling partition wall is then completed using the inside of 1 1/2" x 1 1/2" angle trims fastened to the panel with tek self drilled screws. Make certain that both legs of the partition panel and trim angles are sealed to the panel with a bead of silicone.

SAMPLE DRAWING (OF AN EXISTING JOB)-WAREHOUSE PANELS

SCALE: NTS	DRAWN BY:	DATE:	REV:
------------	-----------	-------	------

575 EAST 43th AVENUE, WALEAH, FLORIDA 33043 TEL.(305)884-8384.TOLL FREE 1(800)627-5665 FAX(305)884-8330		JOB NUMBER:
---	--	-------------

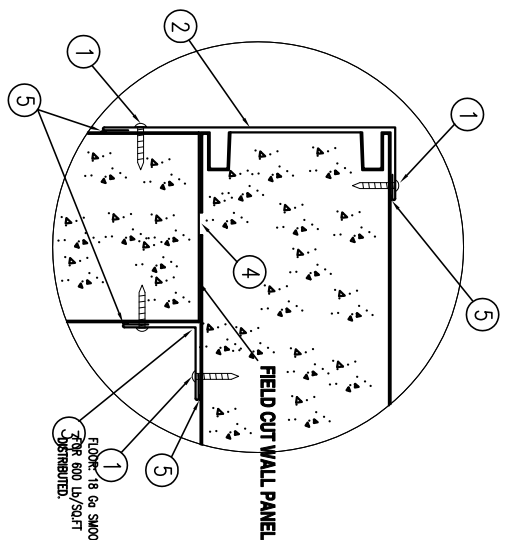




(OPTIONAL)

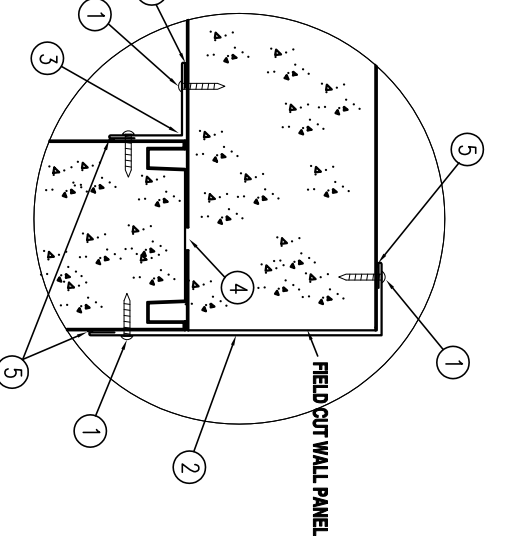
CEILING SECTION DETAIL (E)

BOLT-DOWN CEILING TO WALL CONNECTION DETAIL



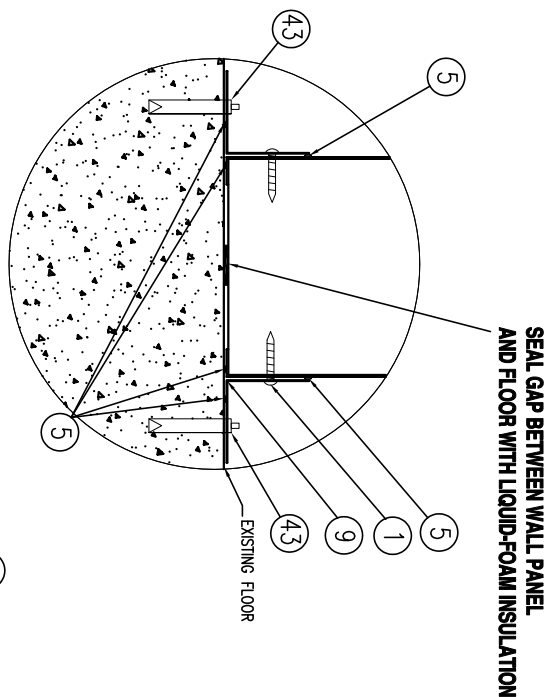
WALL TOP-VIEW SECTION (I)

WALL TO WALL CONNECTION DETAIL



WALL TOP-VIEW SECTION (J)

WALL TO WALL CONNECTION DETAIL



WALL CONNECTION TO FLOOR SLAB DETAIL (K)

SEAL GAP BETWEEN WALL PANEL AND FLOOR WITH LIQUID-FOAM INSULATION

NUMBER	DESCRIPTION	(4" PANEL)
1-	#8 X 3/4" TEK SCREW @ 12" O.C.	
2-	2" X 6" X 120" EXTERIOR METAL TRIM ANGLE	
3-	2" X 2" X 120" INTERIOR METAL TRIM ANGLE	
4-	THERMAL BREAK (BY OTHERS)	
5-	CONTINUOUS BEAD SEALANT	
6-	BOLT-DOWN CEILING PANEL SCREW	
7-	3/16" X 5 1/2" WITH THERMAL BREAK BY OTHERS	
7-	SILICONE SEALANT	
8-	WALL PANEL TOP REINFORCED WITH WOOD AND NSF GASKET ON BOTH SIDES, FACTORY INSTALLED	
9-	1 1/2" X 1 1/2" ALUMINUM ANGLE	
9-	EXTERIOR AND INTERIOR	
43-	1/4" X 1 1/2" DRIVE-PINS AT 24" O.C (BY OTHERS)	

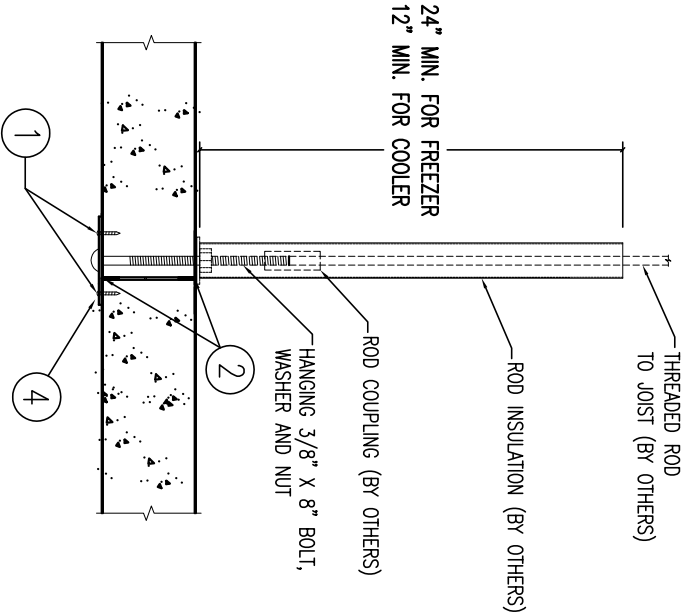
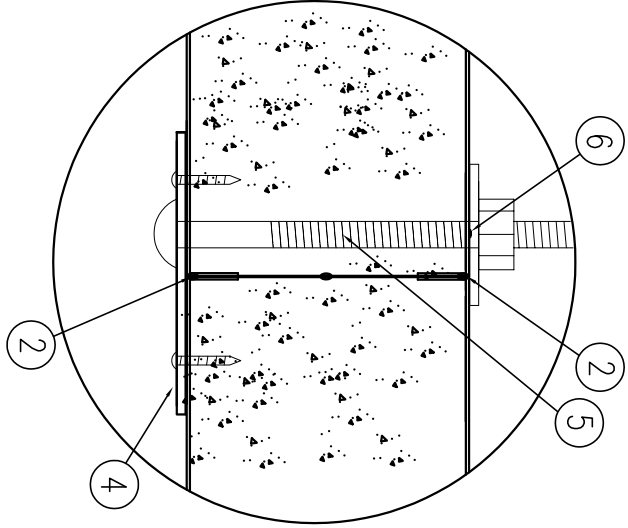
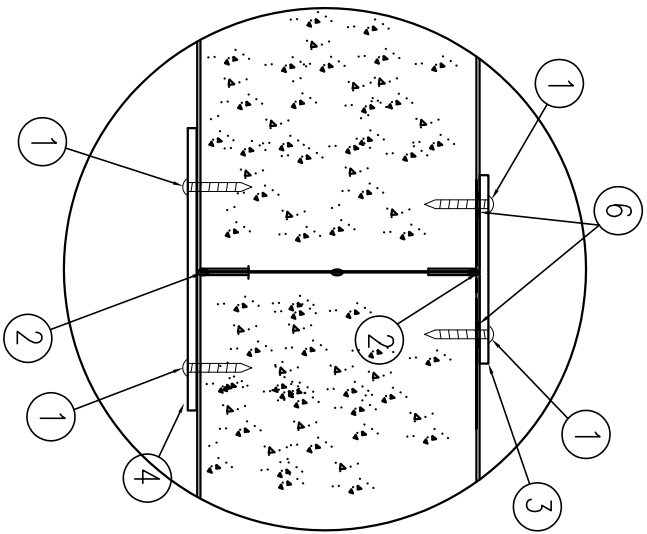
PLEASE, SEE INSTALLATION PROCEDURE ON PAGE 8



SAMPLE DRAWING (OF AN EXISTING JOB)-WAREHOUSE PANELS

SCALE: NTS	DRAWN BY:	DATE:	REV:
575 EAST 43th AVENUE, HIALEAH, FLORIDA 33043 TEL. (305)884-8384. TOLL FREE 1(800)627-5665 FAX (305)884-8330		JOB NUMBER:	

C:\Documents and Settings\erickr\My Documents\BOXES FOR INTERNET\NEW PRODUCTS FOR INTERNET.dwg, 1/23/2009 11:53:11 AM, enrique



DETAIL (3)

**SECTION H-H**

**CEILING ASSEMBLY TOP SIDE SECURING PLATE  
3" X 2" X 0.08" THICK ALUMINUM FOR PANELS JOINT**

NUMBER	DESCRIPTION
1-	#8 X 3/4" TEK SCREW @ 12" O.C.
2-	CONTINUOUS BEAD SEALANT
3-	4" X 4" X 0.50 EXTERIOR PLATE CEILING SECURING TOP JOINT WITH TEK SCREWS
4-	CEILING SUPPORT SYSTEM 1/4" X 4" ALUM. FLAT BAR
5-	HANGING 3/8" X 8" BOLT, WASHER AND NUT
6-	SILICONE SEALANT

**CEILING SUSPENSION ASSEMBLY  
DETAILS SECTION H-H**

**BOTTOM 4" X 1" X 1/8"  
ALUMINUM CHANNEL WITH  
PAN-THRU BOLT TO THREADED ROD  
TO BUILDING CEILING BEAM  
OR PANELS JOINTS**

**CEILING SUSPENSION ASSEMBLY  
DETAILS SECTION H-H**

**BOTTOM 4" X 1" X 1/8"  
ALUMINUM CHANNEL WITH  
PAN-THRU BOLT TO THREADED ROD  
TO BUILDING CEILING BEAM  
OR PANELS JOINTS**

PLEASE, SEE INSTALLATION  
PROCEDURE ON PAGE 8

**SAMPLE DRAWING (OF AN EXISTING JOB)-WAREHOUSE PANELS**

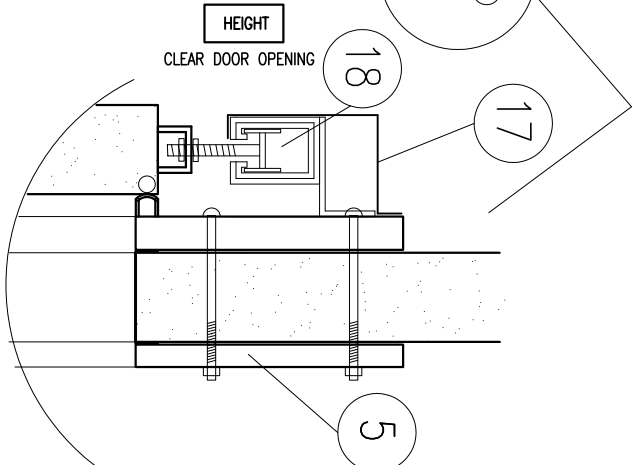
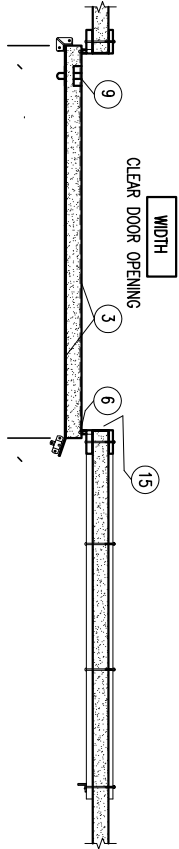
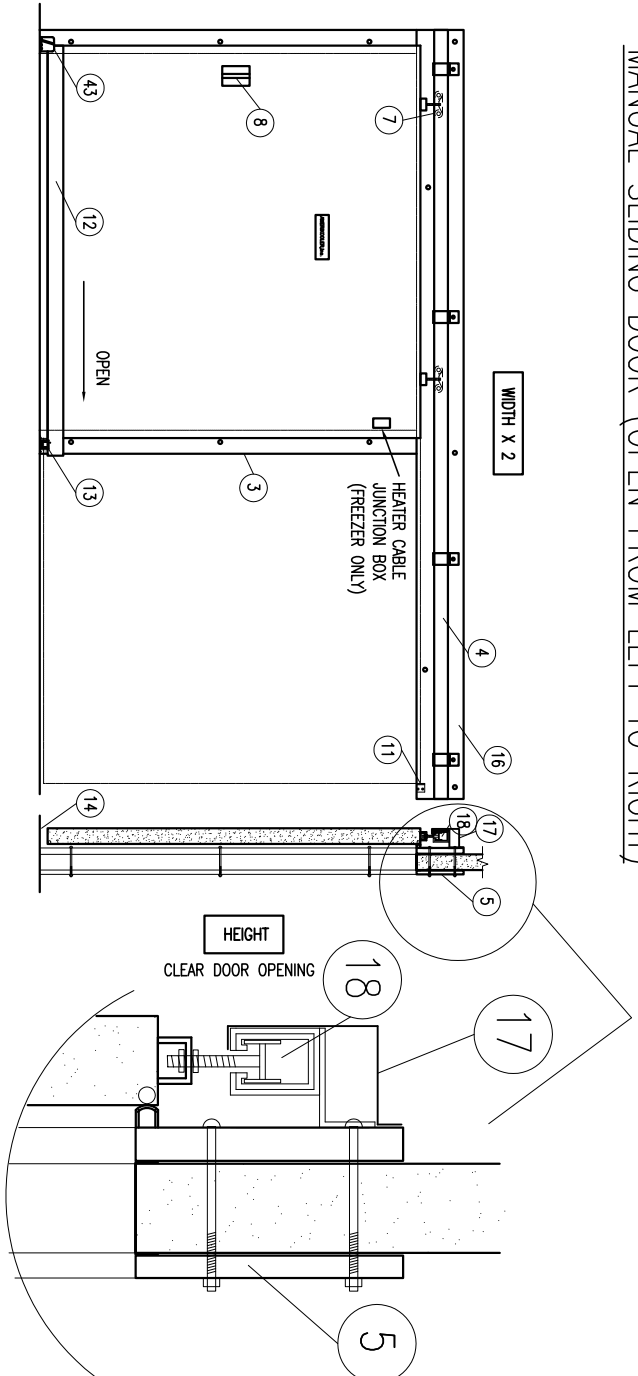
SCALE: NTS	DRAWN BY:	DATE:	REV:
------------	-----------	-------	------

JOB NUMBER:

575 EAST 43th AVENUE, HIALEAH, FLORIDA 33043  
TEL.(305)884-8384.TOLL FREE 1(800)627-5665  
FAX(305)884-8330



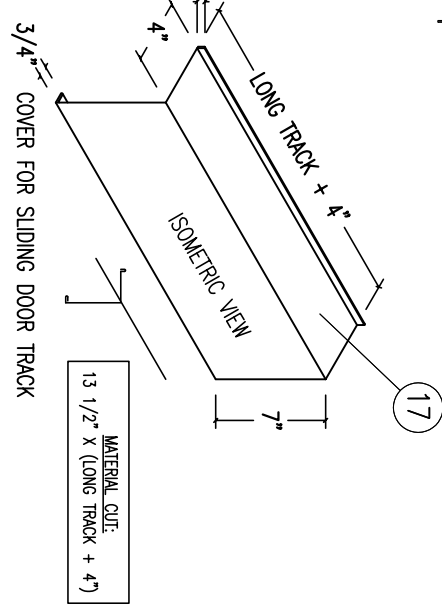
MANUAL SLIDING DOOR (OPEN FROM LEFT TO RIGHT)



- EACH DOOR:**
- (6) TRACK, SWEEPS, WRAPPED WOODS AND LOOSE ACCESSORIES
  - (1) VAPOR ROOF LIGHT W/LEXAN GLOBE
  - (1) SWITCH W/COVER PLATE
  - (1) THERMOMETER W/SCREWS
  - (1) STOP BUMPER W/EXP. SCREWS
  - (1) ROLLER GUIDE
  - (11) CARRIAGE BOLTS 8" LONG, W/NUTS AND WASHERS
  - (1) FRONT DIE CAST DOOR STOP
  - (2) ENDS CAPS

**STANDARD SIZES**

WIDTH	HEIGHT
5'	7'
5'	7' 1/2"
6'	8'
7'	8'
8'	8'
9'	8'
43'	8'



**4" INSULATION:**  
**AK-XPS4™**  
**HI-PERFORMANCE**  
**PANEL CORE**  
**COOLERS R-29**  
**FREEZERS R-32**

- STANDARD FEATURES:**
- 1- 4" INSULATION: AK-XPS4 HI-PERFORMANCE PANEL CORE.
  - 2- ACRYLIC COATED GALVALUME METAL FINISH IN & OUT
  - 3- OUTSIDE CASING OF 1 5/8" X 12" METAL CLAD WITH BUBBLE NEOPRENE GASKET ON 3 SIDES
  - 4- ADJUSTABLE IN-OUT, UP-DOWN
  - 5- INSIDE CASING OF 1 5/8" X 12" METAL CLAD TOP, & 6" SIDES
  - 6- HEATER CABLE 145 VOLT WITH J. BOX ON FREEZER DOORS
  - 7- TWO, 4-WHEEL BEARING TROLLEYS ON FREEZER DOORS
  - 8- OUTSIDE CHROME-PLATED 8 1/4" PULL HANDLE
  - 9- INSIDE RECESSED PULL HANDLE
  - 43-FRONT DIE CAST DOOR STOP
  - 11-REAR DOOR STOP BUMPER
  - 12-TRAILER ALUMINUM EDGE 4" HIGH WITH 3" WEDGE
  - 13-REAR FLOOR GUIDE ROLLER
  - 14-DOUBLE NEOPRENE BOTTON SWEEP GASKET
  - 15-4" PVC CHANNEL FOR 4" WALL OR 1" X WALL THICKNESS METAL CHANNEL FOR WIDER WALLS.
  - 16-COMPLETED ASSEMBLED TRACK SYSTEM FOR EACH INSTALLATION
  - 17-COVER FOR SLIDING DOOR TRACK
  - 18-END CAPS COVER FOR SLIDING DOOR TRACK

**REQUIRED INFORMATION**

COOLER       TEMPERATURE  
 FREEZER       TEMPERATURE

CLEAR DOOR OPENING IS: \_\_\_\_\_

DOOR SIZE IS: \_\_\_\_\_

HEATER CABLE  143 VOLT       220 VOLT

KICK PLATE OUTSIDE:  
 24" HIGH       48" HIGH

PLASTIC STRIP CURTAIN SIZE: \_\_\_\_\_

OTHERS: \_\_\_\_\_

SAMPLE DRAWING (OF AN EXISTING JOB)-WAREHOUSE PANELS

SCALE: NTS	DRAWN BY:	DATE:	REV:
------------	-----------	-------	------

JOB NUMBER: \_\_\_\_\_

575 EAST 43th AVENUE, HIALEAH, FLORIDA 33043  
 TEL. (305)884-8384. TOLL FREE 1(800)627-5665  
 FAX (305)884-8330



C:\Documents and Settings\errique\My Documents\BOXES FOR INTERNET\NEW PRODUCTS FOR INTERNET.dwg, 1/23/2009 11:53:36 AM, errique

January 18, 2000

## Warehouse Panels AK-MTG QUICK-SNAP™

### Installation Procedures

The details contained in the following pages and drawings are merely suggestions/guidelines as to how Amerikooler AK-MTG Continuous Line Warehouse panels and materials can be installed. Details may require adaptation, changes, since each project conditions are unique.

Dealers, Distributors, General Contractors and/or installers are responsible to ensure that our drawings and details are adapted to meet particular building requirements, and codes.

Experienced installers should familiarize themselves with all erection instructions before starting. Some field cutting of panels, cutting thermal-break in panels, installation of trims and minor field correction of materials is part of normal erection work.

### Laying Out the Project

- 1) Examine the job SHOP-DRAWING.
- 2) Examine the job SPECIFICATION and DETAILS.
- 3) All panels should be leveled at the top. The slab should not deviate from the bottom of the wall panel more than 1/8 inch in 43ft.
- 4) Deviation greater than 1/8" will require shimming and sealing the gap with liquid-foam-insulation. (see wall connection to floor detail L and K.)
- 5) Floor area must be smooth, clean, and dry.
- 6) Coolers (35F) are generally constructed with-out mass insulated floor.
- 7) Freezers with mass insulated floor, Dow's Panel Core "blueboard" of 4ft x 8ft rigid board foam with staggered joints over 43 mil visqueen as vapor barrier (by others) over the concrete sub floor.

8) On Freezer make a cut of 1" Thermal-Break across the metal face of the panel at 2" from the edge of the panel. Make sure the exterior and interior face is sealed with continuous butyl on both ends of the panel. Usually at the junction of panels/connection. Cold temperature can migrate through the connection to warmer air, resulting in condensation and/or ice formation (see detail I, E-E, F-F)

9) Urethane liquid foam insulation is used to fill gaps such as corners, unlevelled floors to wall, as well as, fill gaps such as corner panel trims and tek screws.

10) Anchor the exterior aluminum floor angle in location with masonry pin grip anchor or equal at 12" to 24" on centers (see detail K)

11) Continuous bead of silicone must be applied along the inside of each leg of the external aluminum angle, sealing it to the floor and to wall panel. Repeat some application to the interior floor angle (see detail K)

12) Begin to install wall panels against the already anchored exterior aluminum floor angle. Generally, the first panels to be installed are at a corner of the room. Raise the corner panels into position.

Note: Corner can be pre-assembled and raised into position. Walls of greater heights require that each panel be raised into position and the corner assembled in place (see detail I and J)

13) Overlapping corners are assembled by first measuring the outside of the corner. Cut the panel metal face along the measure line. Repeat the same process on the other side, cutting the panel metal face. Then cut the insulation with a knife or equal (see detail M).

14) The assembling is then completed using the outside angle trims 2" x 6" and the inside of 2" x 2" angle trims fastened to the panel with tek self drilled screws. Make certain that both legs of the exterior and interior trim angles are sealed to the panel with a bead of silicone (see detail E-E, F-F).

15) Coolers: Apply a continuous bead of butyl to the tongue (male) profile on both exterior and interior (see detail N)  
Freezer: Apply a continuous bead of butyl to both tongue (male) and groove (female) profile on the exterior and interior (see detail P)

16) Raise the next panel and align it with the aluminum floor angles and position it against the panel previously placed. A slight tilting of the panel to align the bottom first will make it easier to obtain a tight juncture (see detail L, K).

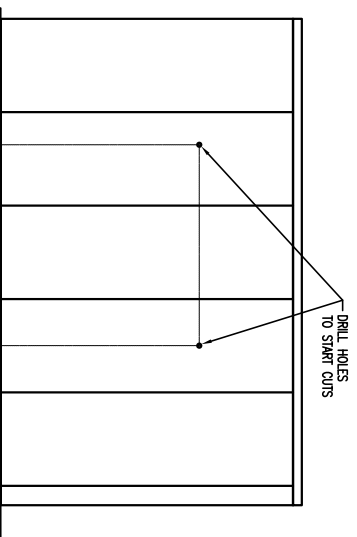
17) To install Ceiling panel bolt down ceiling panel to top of wall panel with lag bolts. Ceiling to wall is reinforced for a fast and stronger structural connection with 3/4" inches plywood bonded and secured by 1/2 inch x 90° metal bend (see detail E-E, F-F)  
Option: interior 2" x 2" metal trim where there is not space to bolt-down ceiling to wall (see detail E-F).

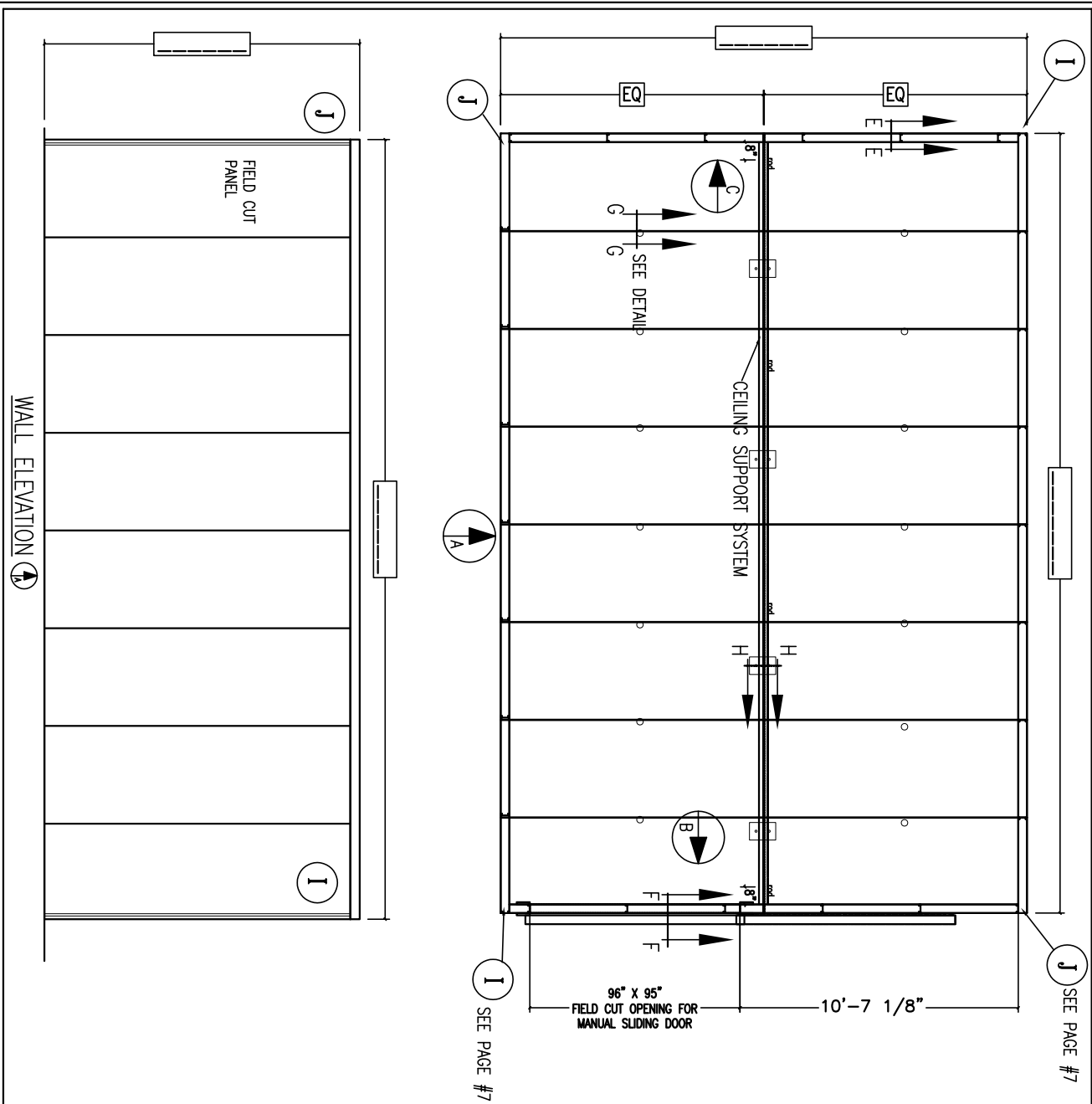
18) **It's recommended that the walls are erected in frigs (wall to ceiling and ceiling to wall).** This will increase the stability of the erected section and maintain squareness of the box.

19) Support system of ceiling panels will carry the weight of the ceiling panel sections with an interior 4" x 1" x 1/8" aluminum channel with a 3/8" x 8" bolt thru the ceiling panel and seal it with silicone. A 3/8" thread rod connected to building structure is supplied by others. Seal the exterior side of ceiling panels with silicone. Secure interior support 4" x 1" aluminum channel with tek screw to the ceiling panels every 12". Insulate the threaded rod 12" height for medium temperature, and 24" height for low temperature. Use insulation accordingly to box temperature application. See detail/section H-H.

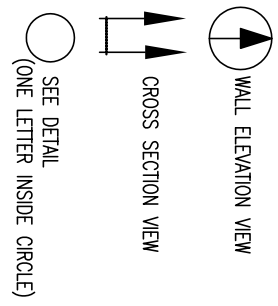
### Wall Opening for Doors and Windows

20) Measure off the door or window size over face of panel as shown by dotted lines. Have enough clearance for all door or window parts. Drill holes at upper left and upper right corners of the opening. Transfer hole locations to the interior face of the panel. Cut face of panel with a heavy duty reciprocating saw or a circular saw. Remove foam with sharp knife. Cut floor angles. Seal all edges of panel. Install door frame and trim per door or windows manufacturer's recommendations





**AK-MTG QUICK-SNAP™  
WAREHOUSE PANEL**

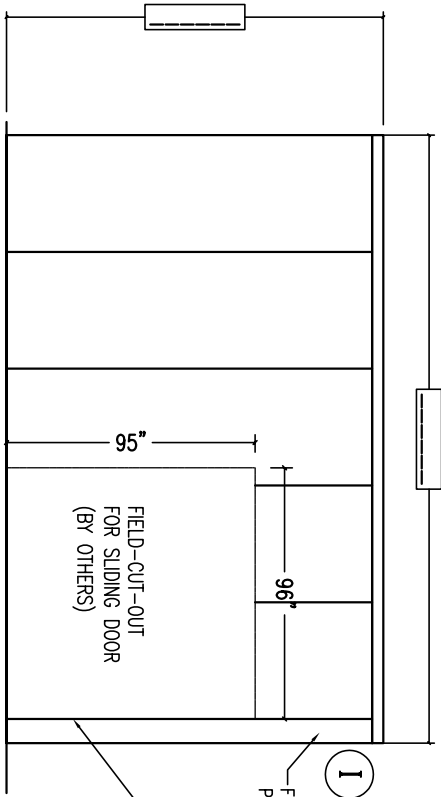


<b>4" INSULATION:</b>
<b>AK-XPS4™</b>
<b>HI-PERFORMANCE PANEL CORE</b>
<b>COOLERS R-29</b>
<b>FREEZERS R-32</b>



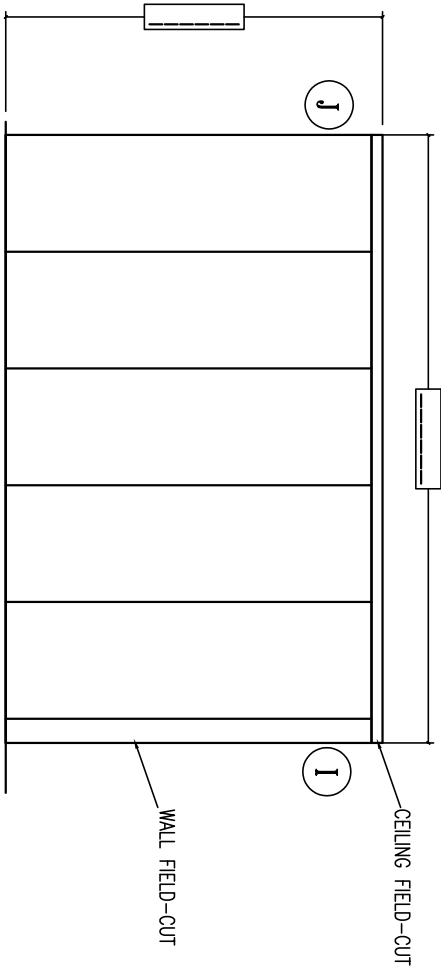
**SAMPLE DRAWING (OF AN EXISTING JOB)-WAREHOUSE PANELS**

SCALE: 1/4"=1'	DRAWN BY:	DATE: 2/16/2008	REV:
575 EAST 43th AVENUE, HIALEAH, FLORIDA 33043 TEL. (305)884-8384. TOLL FREE 1(800)627-5665 FAX (305)884-8330		JOB NUMBER:	
PAGE: 29 of 43			

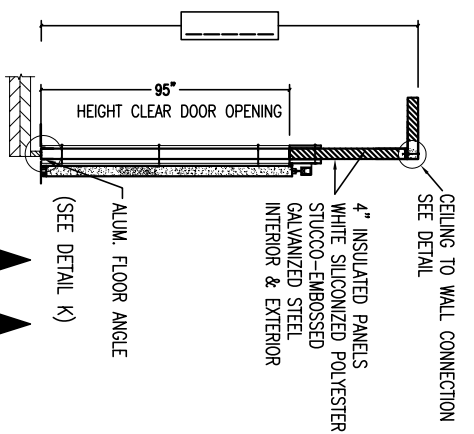


**INSTALLATION PROCEDURE #20**

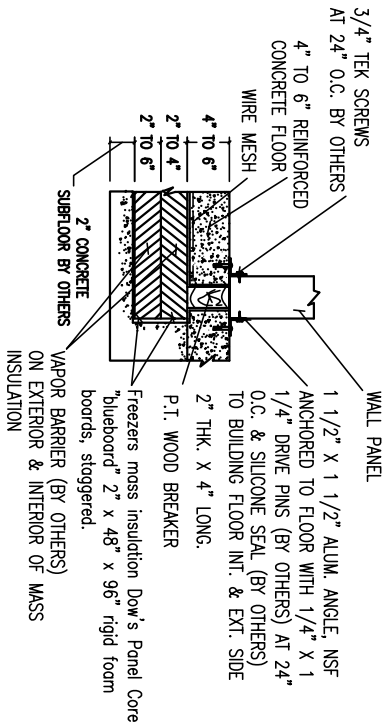
4" PVS CHANNEL FINISH TO COVER DOOR FIELD-CUT.  
3 SECTIONS OF 4" X 120" TO BE FIELD CUT.



**WALL ELEVATION VIEW FROM THE INSIDE OF THE BOX, FOR WALL (C)**



**SECTIONAL VIEW AT SLID. DOOR OPG.**



**FREEZER MASS INSULATION DETAIL (K)**

PLEASE, SEE INSTALLATION PROCEDURE ON PAGE 8



**SAMPLE DRAWING (OF AN EXISTING JOB)-WAREHOUSE PANELS**

SCALE: 1/4"=1'      DRAWN BY:      DATE:      REV:

575 EAST 43th AVENUE, HALEAH, FLORIDA 33043  
TEL. (305)884-8384. TOLL FREE 1(800)627-5665  
FAX (305)884-8330

JOB NUMBER: